



**FACADE  
SOLUTION  
EXPERTS**

# FACADES & CLADDING SPECIALISTS

Based in Basildon, Essex, Eden Facades was established over a decade ago by founders Tony Hill and Paul Michaelson, whose combined skill sets and shared determination have seen the company evolve into one of the leading facades sub-contractors in the South East. We take pride in being able to provide a broad range of facade solutions, all of which are industry leaders in their respective sectors.

- Insulated render systems
- Specialised renders
- Lightweight structural framing
- Rainscreen cladding systems
- Cladding remediation
- Insulated panel systems

## CONTENTS

- 02 About us
- 03 Our mission & values
- 04 Lightweight structural framing
- 05 External wall insulation
- 06 Rainscreen cladding
- 08 Cladding remediation
- 09 Client testimonials
- 10 Case studies

# GREAT PEOPLE, DOING A GREAT JOB

## OUR MISSION

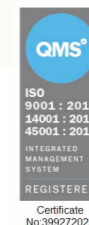
We are a conscientious, disciplined, and forward-thinking team with many years of combined expertise within the facades industry. Our mission is to deliver a finished product of the highest quality, on time and on budget, which we achieve by insisting on the highest standards of workmanship, from our experienced team and through our close relationships with our market-leading specialist supply chain partners.

## OUR VALUES

We aim to achieve the same high level of quality and service for all our clients, regardless of project size, type, or location. We offer a full supply and installation service for all facades and, through our supply chain partners, a bespoke and comprehensive design service. Clients can be confident of receiving a complete quote with no hidden surprises, and that the job will be done right, first time around. Our forthright approach, and the peace of mind that our years of experience affords our clients, continues to result in winning contracts with existing and new clients.

## QUALITY & SAFETY ASSURED

Our drive to provide a superior service is supported by our commitment to maintaining a detailed knowledge of approved materials, and continually reviewing our skillset and processes so that we are meeting, and exceeding, the high standards demanded by our clients.



...it was vital that we worked with a team we could trust to deliver an outstanding quality of finish. We're looking forward to working with Eden Facades again and know the work they deliver will be first-class.

John McGrath, Senior Site Manager, Berkeley Homes Central London



# LIGHTWEIGHT STRUCTURAL FRAMING

Lightweight structural framing systems (SFS) are one of our key disciplines, in which we have gained over 20 years' experience. We can install both infill and over sail systems to meet the architectural design. SFS is a structural framing system that is flexible, light, quicker to install, and a cost-effective alternative to traditional brick and block work. Our supply chain partners can provide fully warranted designs covered by professional indemnity insurance.

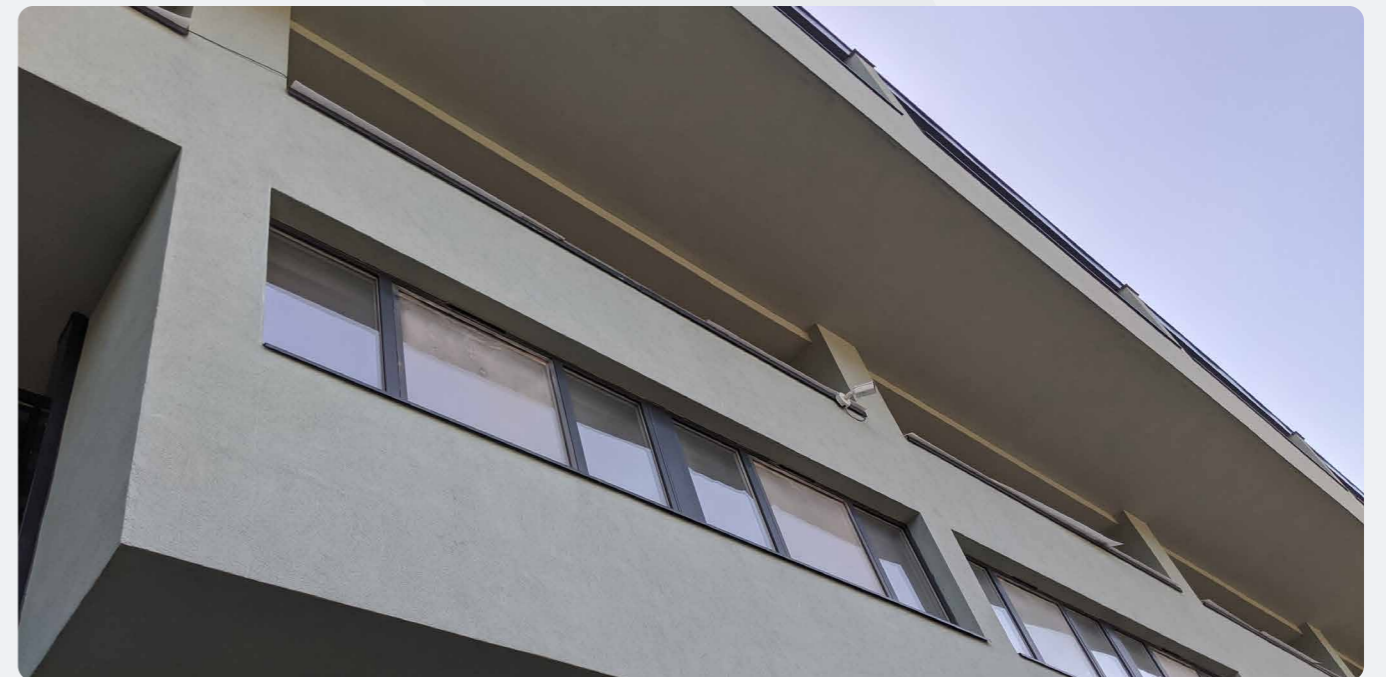
- Up to 60% quicker than a traditional build
- Water tightness achieved quicker
- Zero drying time
- Precision engineered products, manufactured to tight tolerances ensuring exact performance
- Lightweight but high strength
- Cost effective solution
- Large spans and large structural openings can be designed in
- Steel sections are 100% recyclable, helping to meet tighter Government legislation
- Our in-house design team can be involved at all stages of the project to offer a cost-effective design solution



# EXTERNAL WALL INSULATION

We have gained extensive experience in the application of EWI systems over the past 25 years, and consider ourselves experts in this field. With over one hundred trained operatives working throughout the South East and East of England, we have the ability to serve projects across the majority of the country.

- All finishes are through coloured
- Low or no maintenance
- Superb weather resistance
- High resistance to impact
- A reduction in unnecessary heat loss & CO<sup>2</sup> emissions
- Have a positive effect on the environment
- A reduction in condensation
- Protecting and prolonging the lifespan of the external fabric of a building
- 30-year life expectancy





# RAINSCREEN CLADDING TERRACOTTA & FIBRE CEMENT

## TERRACOTTA

Terracotta provides an impactful, timeless facade renowned for its durability and made from 100% natural material. Easily installed in all weather conditions, terracotta cladding will improve the energy efficiency of the building, and due to its durability, is an economical solution.

- Creates a striking, aesthetically pleasing facade
- Environmentally friendly, made from 100% natural materials
- Durable and long-lasting
- Low maintenance costs

## FIBRE CEMENT

Fibre cement provides a low-maintenance, weather-resistant solution. Fibre cement can be through coloured or painted to achieve the desired aesthetic. Fibre cement is lighter than other types of cladding and quick to install; our contractors have experience working with many different suppliers and are able to adapt to challenges often found on site.

- A durable, low maintenance solution
- Lightweight compared with other types of cladding
- Can be coloured to fit in with overall aesthetic
- Easy installation onto a wide range of substrates



# RAINSCREEN CLADDING ALUMINIUM & TIMBER

## ALUMINIUM

Aluminium cladding provides a durable, low-maintenance solution that will protect exterior walls from the elements. The lightweight material means the loadings on the underlying building structure are much less than masonry-based materials, whilst providing a low-cost method of improving the building's thermal performance.

- A durable and versatile solution
- Creates a striking visual impact
- Can be installed quickly and easily
- A low-cost method of improving thermal performance

## TIMBER CLADDING

Timber cladding is an increasingly popular choice, with various products available including Western Red Cedar, Siberian Larch and Thermowood. We use timber from sustainable sources, for which certificates can be provided, and are able to provide fire retardant treatments if required.

- An attractive and economical solution
- Wide variety of timber species and cladding configurations
- Ease of installation
- Can be fixed to a variety of different substrates





# CLADDING REMEDIATION

The programme launched by the Government to identify and prioritise the removal or remediation of cladding similar to that found on Grenfell Tower has made good progress, with housing associations and building owners taking action to review fire risk across all buildings, to keep buildings and their inhabitants safe. We are specialists in this area, working with a growing number of clients on cladding remediation and strip and reclad projects.

- Safety: older rainscreen cladding may no longer meet new legislation and standards
- Compliance: ACM cladding must be removed in buildings of 18m or over
- Environmental: replacing existing cladding can significantly extend the lifespan of a building



**[Due to the sensitivity and the nature of the cladding work being carried] The Health and Safety Executive came to the site, looked at what we were doing, what Eden were doing, and went away happy that everything was being done correctly. It's a good endorsement and we wouldn't hesitate to work with Eden Facades again on future projects.**

Gavin Leeks, Building Solutions Manager, RG Carter



# REVIEWS



The communication we received from Eden Facades was consistently good, and they kept us abreast of developments on the project. We would have no hesitation in working with them again on future projects.

Ed Dwight, Project Manager, Kier Construction



It was vital that we worked with a team we could trust to deliver an outstanding quality of finish. We're looking forward to working with Eden Facades and know the work they deliver will be first-class.

John McGrath, Senior Site Manager, Berkeley Homes Central London



The Eden Facades team demonstrated they could adapt and find solutions to challenges that would allow everyone to work efficiently and complete the project in a tight timeframe.

Stephen Robinson, Site Manager, Conamar



Of course, as with any project, there have been challenges, but Eden have been able to help us work through them, and as the project has progressed, we've found them to be a very reliable partner. They've really helped to keep things running smoothly. I would have absolutely no hesitation in working with them again

Liam Fennessy, Project Manager  
Weston Homes



## WEST END GATE, LONDON

### Products

Hook-on cassette rainscreen cladding; PPC metal railings & balustrades; Kingfisher louvres

Designed by award-winning architects Scott Brownrigg, West End Gate is a collection of homes set close to the upmarket neighbourhood of Marylebone in central London.

With the whole development taking place over several years, we were brought in by main contractor Berkeley Homes Central London, to work on Blocks C, D and B of the project. Our scope of works for these chic homes included installing rainscreen cladding in both patterned and plain panels, metal railings and balustrades to balconies and a rooftop plant screen louvre.



**Contractor**  
Berkeley Homes  
Central London

# RIVERSIDE LEISURE CENTRE, ESSEX

## Products

Ash & Lacy lightweight steel framing system; Ash & Lacy Lingrid aluminium cassette rainscreen cladding; Wetherby insulated render system

Riverside Leisure centre in Chelmsford benefited from a multi-million-pound redevelopment, achieving a BREEAM 'very good' rating. With new and improved facilities for the visitors inside the centre, it was our responsibility to ensure that the outside of the building fulfilled the architects' vision and blended in with the surroundings. Working in partnership with Kier Construction Eastern, we were brought on board to install lightweight steel framing, rainscreen cladding, render and insulated render.

We used Ash and Lacy site fixed lightweight steel framing, a system that is flexible and light and works with the majority of external finishes, and Ash and Lacy's Lingrid system to achieve the stunning 'bubble' look of the architect's design.



**Contractor**  
Kier Construction

## ASSEMBLY BUILDINGS, LONDON

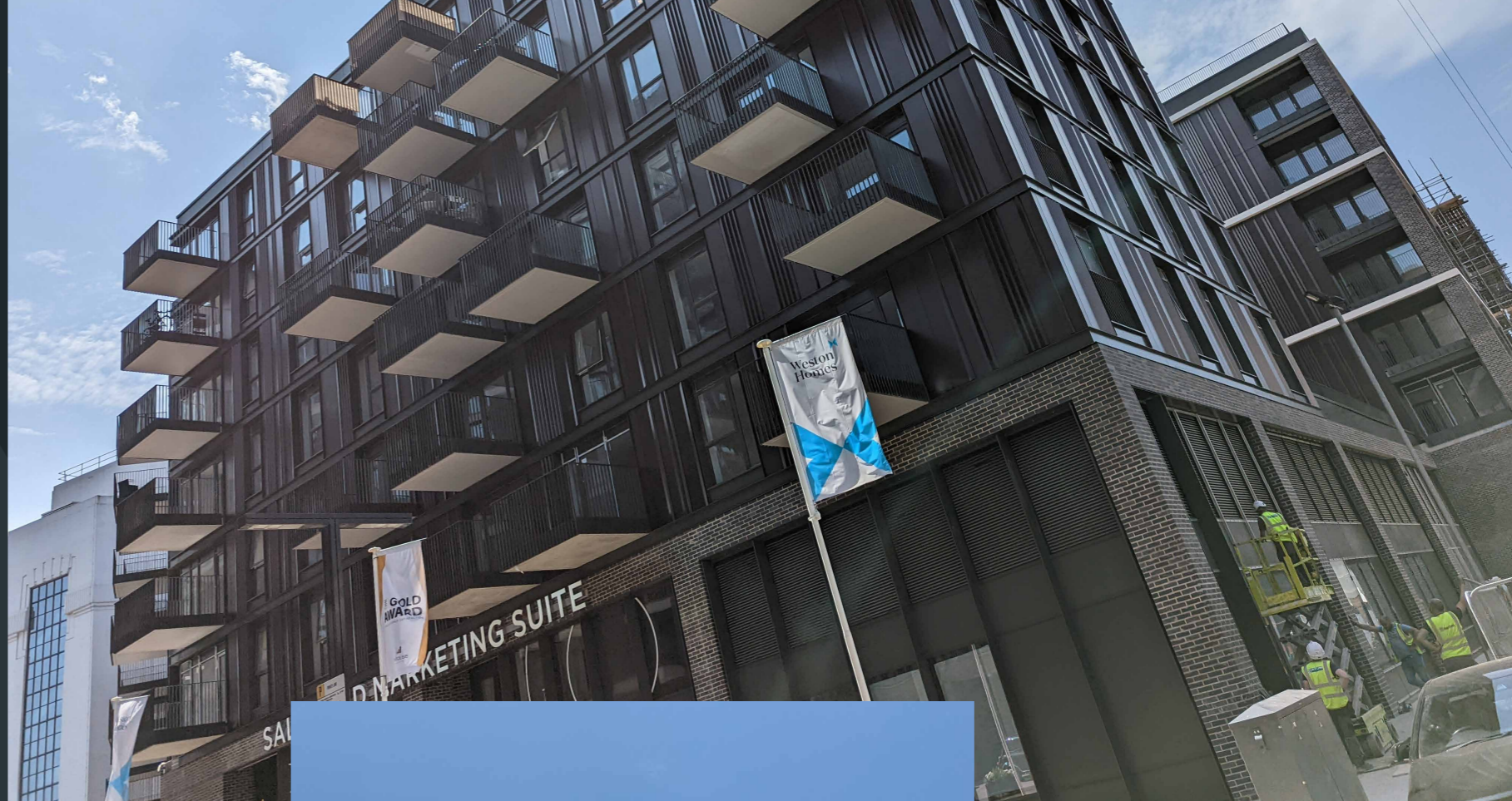
### Products

Bespoke profiled aluminium rainscreen cladding; perforated steel profiles.

The Assembly Buildings in Hayes, West London, is a development of contemporary apartments that forms part of the regeneration of the Old Vinyl Factory, home of EMI and where records for artists such as The Beatles and The Rolling Stones were pressed.

The redevelopment of the iconic site also includes office buildings, restaurants, shops and a cinema. In our first project for main contractor Weston Homes, our scope was to install bespoke folded aluminium rainscreen cladding to the three concrete-framed blocks, and perforated steel profiles to the ground floors.

With many of the apartments now occupied, we are proud to have delivered a first-class project.



**Contractor**  
Weston Homes





## Addington Valley, Croydon

### Contractor

Kier Construction

### Products

SFS supplied by Metsec; Y-wall sheathing board supplied by RCM; Vitrafix system and Ceramapanel cladding supplied by Valcan.

Designed by Noviun Architects, the project at Addington Valley Academy involved the demolition of the old community centre that had previously stood on the site, re-landscaping the area, and the construction of a new, steel-framed school building.

Having worked with Kier Construction on many projects previously, we pre-qualified for the project at Addington Valley through the Kier supply chain process and were awarded the contract based on our technical review and previous experience.



## Renaissance & Baroque, London

### Contractor

United Living

### Products

Wetherby insulated render system.

Our scope was to remove the existing EPS insulated render system and sheathing boards from the residential blocks and replace with an A-rated sheathing board and mineral fibre insulated render system from Wetherby.

As a large strip off and reclad project, the QA process for the project was rigorous, ensuring all fire breaks and windows were in line with the most recent fire regulations. The client was delighted with the finished result for this high profile project.



## 9 Millbank, London

### Contractor

Berkeley Homes Central London

### Products

Hadley Steel Framing SFS off-site steel bolted frame system.

Occupying a statement address in the heart of Westminster, this residential development at Millbank in central London offers a collection of prestigious Grade II listed homes.

Having worked with main contractor Berkeley Homes Central London on previous projects, we were appointed by them again to work on this impressive development.

Our initial scope of works was to install 100mm SFS as roof trusses, fixed to the existing concrete primary structure.



## Premier Inn, Faversham

### Contractor

Conamar Building Services

### Products

Rockpanel cladding; Aluminium surround panels and copings; Monocouche render.

Having worked with Conamar previously, we were delighted to be appointed by them again to work on their second Premier Inn project.

Our package of works for the build included all external facades with the exception of bricks and glazing, and in this case the specification was to install Rockpanel cladding, aluminium surround panels and copings, and monocouche render on the building's gable ends and main entrance.



## Marie Weller School, Towcester

**Contractor**  
Darwin Group

**Products**  
Eurobrick brick slip system; Cedral Click cladding panels.

Darwin Group were appointed as the main contractors for the school in Towcester, having delivered many successful construction projects for the education sector. We have previously worked with Darwin Group to deliver projects in the education sector, and were pleased to be awarded this large-scale project as a result of our good relationship with them.

Our scope for the project was to install timber battens and the Eurobrick brick slip system, along with Cedral Click cladding panels.



## Brighton & Hove Albion FC, Brighton

**Contractor**  
Buckingham Group Contracting Ltd

**Products**  
Kingspan SFS, Wetherby insulated render system.

Having worked with Buckingham Group on the first and second phases of the multi-million-pound development for Brighton's Premier league team, we were pleased to be back in East Sussex to undertake works to an extension of the main building.

Our scope for this project was in line with the first and second stages of the development, assembling and installing the Kingspan Steel Framing System on site, sheathing the SFS with Cemboard CP board and fixing the Wetherby insulated render system.



## Willink School, Burghfield

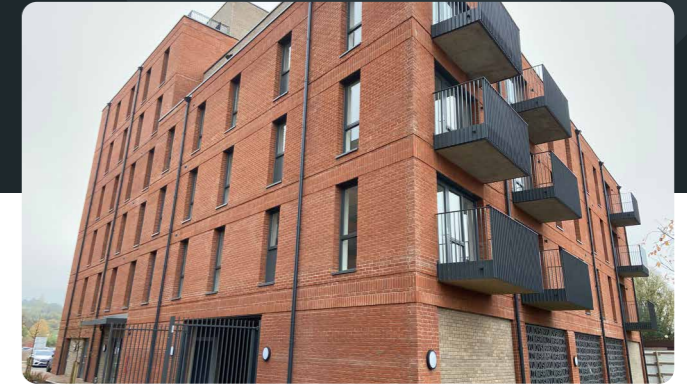
**Contractor**  
Morris & Blunt Ltd

**Products**  
Nvelope NV6 System, Kingspan insulation, fire treated cedar cladding.

In June 2020, main contractor Morris & Blunt Ltd were awarded the contract for a £2.6m extension and refurbishment scheme at the school, a new-build two storey extension comprised of 8 classrooms and a single storey extension, in addition to internal modifications and external works.

We were initially referred to Morris & Blunt through a cladding board manufacturer and have subsequently worked together on many projects.

We take pride in building and retaining strong relationships, and were delighted to be chosen by Morris & Blunt again as one of the specialist sub-contractors for the project at the school.



## St James Quay, Norwich

**Contractor**  
Hill Partnership

**Products**  
SFS supplied by EOS, Siniat boarding, NorDan frames, Rockwool cavity and fire barriers.

St James Quay in Norwich is a prestigious new 'urban community', situated in one of the city's most sought-after areas, close to local amenities and with views of the River Wensum.

We're pleased that our good reputation resulted in us being put forward for our first job for Hill. Our scope was to install the SFS to the penthouse, install insulation, brick tie channels, and window frames.

Our designers and project managers worked efficiently with the Hill team, resulting in a high-end result.



CONTACT US

**01268 744 199**

[office@edenfacades.co.uk](mailto:office@edenfacades.co.uk)

**Eden Facades Ltd  
Cornwallis House  
Howard Chase  
Basildon  
Essex  
SS14 3BB**

 [@edenfacades](https://twitter.com/edenfacades)  [eden-facades-ltd](https://www.linkedin.com/company/eden-facades-ltd)