

# RAF FELTWELL NORFOLK

## CONTRACTOR

Kier Construction

## WHEN

Winter 2022 - Spring 2023

## PRODUCTS

Weber acrylic render on  
Knauf Aquapanel sheathing  
boards

## CATEGORY

INSULATED RENDER  
SYSTEM

## Project Description

RAF Feltwell is a Royal Air Force station located in Norfolk, England. Originally built in 1937 as a bomber station, it later became home to various units, including United States Air Force (USAF) personnel who operated from the base during the Cold War. Today, it serves as a joint sub-regional control and reporting centre, which provides support to the UK's air defence capabilities.

One of the hangars at the centre needed refurbishment prior to being used as a vehicle store, and as part of Kier's supply chain, we were brought in as the specialist cladding and façade experts for the project.

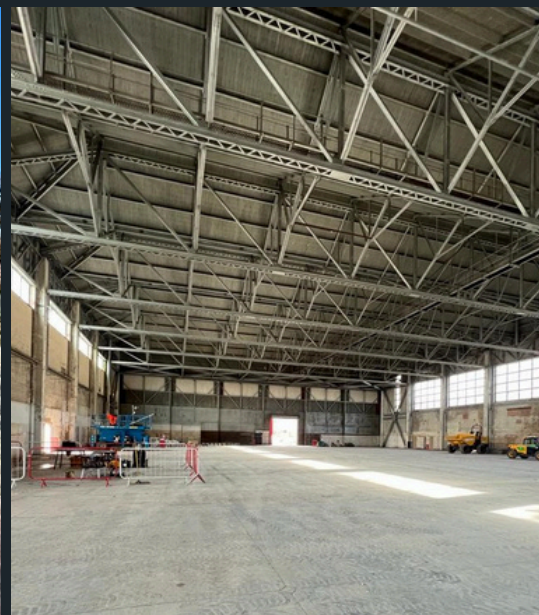
## Our scope

The building itself is huge – large enough to house a football pitch – and our scope was to install timber battens to the substrate, then apply Weber acrylic render on Knauf Aquapanel sheathing boards.

Weber acrylic render is highly resistant to weathering and UV rays, which means it's long-lasting and can withstand harsh environmental conditions. In addition to being water resistant, it's also breathable, which means that water vapour can pass through, helping to prevent moisture build-up inside the building.

As well as being low maintenance once applied, the acrylic render is available in a range of colours and textures, allowing the exterior of a building to be customised according to specific requirements. In the case of RAF Feltwell, the render was coloured in Bitter Chocolate to help the building blend in with its surroundings.





## Work with a partner you can trust

Although we form part of the Kier supply chain and have worked with Kier on many projects in the past, every project is unique and needs a knowledgeable and experienced team to achieve the best results. The project was in safe hands with our Site Manager, Steve Mountford, a specialist in render and insulated render systems with over 30 years of industry experience.

**Commenting on how he found working with us for the first time, Shane Walton, Site Manager at Kier said:**

“This was my first project with Eden Facades, and it’s been very straightforward. From the start of the project, Steve [Mountford] has been very easy to talk to and get on with. Steve said he was going to send his best gang to us, and I think he has! We haven’t had any issues with them at all, nothing has affected the programme.”

“The initial project was for the rendering; because that went so well, we spoke to the team about the rainwater pipes that were needed, and they were able to help price them for us. We had a couple of quotes for the downpipes, and even though Eden’s was slightly more expensive we chose to go with them because we had been so impressed with their gang and the way they worked.”

**Shane Walton, Site Manager at Kier**

## Cold weather and security

Understandably, security on site was high, and our team needed to secure a security pass each morning before they were allowed access. We needed to co-ordinate our team with Kier and the other trades on site, to ensure we would be able to start work once we had access to the base.

The weather was particularly cold during the period we were due to carry out the rendering to the outbuilding, but as our team was able to work quickly, the programme was not impacted, and we were able to complete the work on schedule.

## Building future projects together

Now the rendering is complete, Shane comments on the high standard of finish at RAF Feltwell: “Based on the work Eden has carried out at RAF Feltwell, I would have no issues recommending them for future projects.”

In fact, as a result of the successful project, we were awarded work by Kier installing downpipes at an ammunition store at nearby RAF Lakenheath. Steve comments: “Winning the work at RAF Lakenheath is testament to the great job the team delivered at RAF Feltwell, and the good working relationships we have built with Kier and our wider supply chain.

“At Eden Facades, we take the time to develop these relationships, we want to work with partners who share our values, to build a network based on honesty and trust.”



## CONTACT US

**T 01268 744 199**

**E [office@edenfacades.co.uk](mailto:office@edenfacades.co.uk)**

**T [www.edenfacades.co.uk](http://www.edenfacades.co.uk)**

Operations & Accounts Office, Eden Facades Ltd, Cornwallis House, Howard Chase, Basildon, Essex, SS14 3BB