

SEACON BUILDING

EBBSFLEET

CONTRACTOR

Ash Contracting

WHEN

Spring - Autumn 2024

PRODUCTS

Metsec SFS, Equitone rainscreen cladding, Rockwool insulation, Rockwool fire barriers.

CATEGORIES

LIGHTWEIGHT
STRUCTURAL FRAMING

RAINSCREEN CLADDING

The Seacon Group were looking to construct a new three-storey office facility in a new location for their business in Ebbsfleet to replace their existing office space, which was no longer fit for purpose.

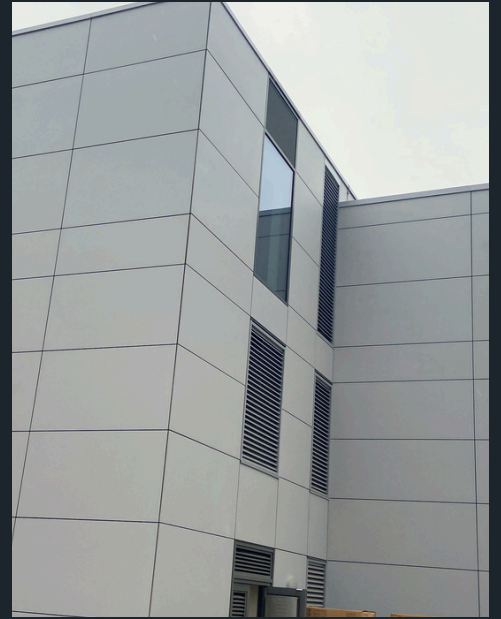
Majoram Architects and the main contractor, Ash Contracting, were instructed to work on the project, and having worked with Ash Contracting on previous projects; the Eden Facades team was approached to carry out the works for the new build overlooking the Thames.

Our scope for this project involved installing SFS infill walling, insulation, and rainscreen cladding. The client specified Metsec SFS, a light gauge galvanised steel structural framing system, Rockwool insulation, and A1-rated fire barriers for its fire protection qualities, and Equitone rainscreen cladding, a solution that boasts excellent thermal properties and an A2-s1,d0 fire rating.

SFS built to perfection

Once the concrete base was installed, our team then got to work installing the lightweight steel frame to specification. With these types of installations, accuracy is vitally important to ensure that it is built exactly to specification. George Dogaru, Project Manager at Eden Facades, comments:

“Often, we allow for a tolerance of +10 or -10mm to ensure all subsequent work can be carried out successfully without causing any significant hiccups or complications. If a mistake happens at the stage when SFS is installed, it can create a chain reaction and could negatively impact the installation of the cladding later in the project.



“As with the case for all our projects, attention to detail is vital, and we successfully achieved accurate installation. It was just 2mm, which was a great effort by the team.”

Following the installation of the SFS, the team proceeded with fitting Y-wall sheathing board and a Siniat fire board. Different boards were specified for different areas of the building with fire safety in mind. George adds:

“The Y-wall boasts A1-rated fire protection for the staircases and special entrances, and the Siniat fire board, which also boasts a high A2-rated fire rating, was installed across the other areas of the building.”

Delivering to the highest standard

After successfully installing the SFS, the insulation and fire barriers were installed. As an approved installer backed by Kiwa accreditation, we're trusted to deliver the installation to the required high standard. Fire cavity barriers play a pivotal role in preventing the spread of fire and smoke through cavities in walls, floors, and ceilings in the case of a fire outbreak and, therefore, require an expert to carry out the installation.

Following the installation, extra checks were carried out following the installation by an independent third party, to ensure that our team had correctly installed the fire barriers and passed without any problems.

A testament to quality work

Finally, Equitone Natura rainscreen cladding and capping were installed on the exterior of the building to complete the look. We have extensive experience in installing a wide range of façade solutions, and we were up to the task. The result is a high-quality finish that completes the building's aesthetic, and the hard work and quality delivered by the team didn't go unnoticed by the client.

Kristian Marjoram, Director at Marjoram Architects, was very complimentary of the work the Eden Facades team had completed, commenting:

“Following a recent site visit, I want to say how good the cladding and capping looks – it's brilliant! Well done.”



Kristian Marjoram, Director at Marjoram Architects

Smooth execution from start to finish

Our close collaboration with Ash Contracting and Marjoram Architects has played a key role in the smooth running of the project. We have worked together to ensure that every aspect of the project has been delivered expertly on time, and on budget.

It was a project free of any hiccups and complications, which speaks volumes about our attention to detail.

CONTACT US

T 01268 744 199

E office@edenfacades.co.uk

W www.edenfacades.co.uk