

**FACADE
SOLUTION
EXPERTS**

FACADES & CLADDING SPECIALISTS

Based in Basildon, Essex, Eden Facades was established in 2011 by founders Tony Hill and Paul Michaelson, whose combined skillsets and shared determination have seen the company evolve into one of the leading facades sub-contractors in the South East. We take pride in being able to provide a broad range of facade solutions, all of which are industry leaders in their respective sectors.

- Insulated render systems
- Specialised renders
- Lightweight structural framing
- Intrusive Surveys
- Rainscreen cladding systems
- Cladding remediation
- Insulated panel systems
- Windows and curtain walling

About us

Our mission & values

Lightweight structural framing

External wall insulation

Rainscreen cladding

Cladding remediation

Intrusive surveys

Windows and curtain walling

Client testimonials

Case studies

GREAT PEOPLE, DOING A GREAT JOB

OUR MISSION

We are a conscientious, disciplined, and forward-thinking team with many years of combined expertise within the facades industry. Our mission is to deliver a finished product of the highest quality, on time and on budget, which we achieve by insisting on the highest standards of workmanship, from our experienced team and through our close relationships with our market-leading specialist supply chain partners.

OUR VALUES

We aim to achieve the same high level of quality and service for all our clients, regardless of project size, type, or location. We offer a full supply and installation service for all facades and, through our supply chain partners, a bespoke and comprehensive design service. Clients can be confident of receiving a complete quote with no hidden surprises, and that the job will be done right, first time around. Our forthright approach, and the peace of mind that our years of experience affords our clients, continues to result in winning contracts with existing and new clients.

QUALITY & SAFETY ASSURED

Our drive to provide a superior service is supported by our commitment to maintaining a detailed knowledge of approved materials, and continually reviewing our skillset and processes so that we are meeting, and exceeding, the high standards demanded by our clients.



...it was vital that we worked with a team we could trust to deliver an outstanding quality of finish. We're looking forward to working with Eden Facades again and know the work they deliver will be first-class.

John McGrath, Senior Site Manager, Berkeley Homes Central London



LIGHTWEIGHT STRUCTURAL FRAMING

Lightweight structural framing systems (SFS) are one of our key disciplines, in which we have gained over 20 years' experience. We can install both infill and over sail systems to meet the architectural design. SFS is a structural framing system that is flexible, light, quicker to install, and a cost-effective alternative to traditional brick and block work. Our supply chain partners can provide fully warranted designs covered by professional indemnity insurance.

- Up to 60% quicker than a traditional build
- Water tightness achieved quicker
- Zero drying time
- Precision engineered products, manufactured to tight tolerances ensuring exact performance
- Lightweight but high strength
- Cost effective solution
- Large spans and large structural openings can be designed in
- Steel sections are 100% recyclable, helping to meet tighter Government legislation
- Our in-house design team can be involved at all stages of the project to offer a cost-effective design solution



EXTERNAL WALL INSULATION

We have gained extensive experience in the application of EWI systems over the past 25 years, and consider ourselves experts in this field. With over one hundred trained operatives working throughout the South East and East of England, we have the ability to serve projects across the majority of the country.

- All finishes are through coloured
- Low or no maintenance
- Superb weather resistance
- High resistance to impact
- A reduction in unnecessary heat loss & CO² emissions
- Have a positive effect on the environment
- A reduction in condensation
- Protecting and prolonging the lifespan of the external fabric of a building
- 30-year life expectancy





RAINSCREEN CLADDING TERRACOTTA & FIBRE CEMENT

TERRACOTTA

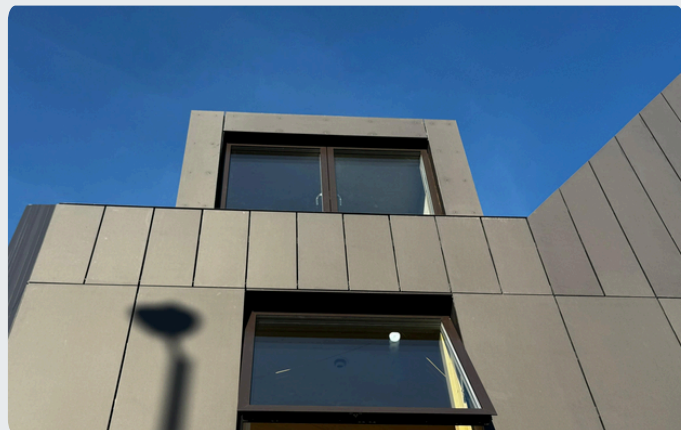
Terracotta provides an impactful, timeless facade renowned for its durability and made from 100% natural material. Easily installed in all weather conditions, terracotta cladding will improve the energy efficiency of the building, and due to its durability, is an economical solution.

- Creates a striking, aesthetically pleasing facade
- Environmentally friendly, made from 100% natural materials
- Durable and long-lasting
- Low maintenance costs

FIBRE CEMENT

Fibre cement provides a low-maintenance, weather-resistant solution. Fibre cement can be through coloured or painted to achieve the desired aesthetic. Fibre cement is lighter than other types of cladding and quick to install; our contractors have experience working with many different suppliers and are able to adapt to challenges often found on site.

- A durable, low maintenance solution
- Lightweight compared with other types of cladding
- Can be coloured to fit in with overall aesthetic
- Easy installation onto a wide range of substrates



RAINSCREEN CLADDING ALUMINIUM & TIMBER

ALUMINIUM

Aluminium cladding provides a durable, low-maintenance solution that will protect exterior walls from the elements. The lightweight material means the loadings on the underlying building structure are much less than masonry-based materials, whilst providing a low-cost method of improving the building's thermal performance.

- A durable and versatile solution
- Creates a striking visual impact
- Can be installed quickly and easily
- A low-cost method of improving thermal performance

TIMBER CLADDING

Timber cladding is an increasingly popular choice, with various products available including Western Red Cedar, Siberian Larch and Thermowood. We use timber from sustainable sources, for which certificates can be provided, and are able to provide fire retardant treatments if required.

- An attractive and economical solution
- Wide variety of timber species and cladding configurations
- Ease of installation
- Can be fixed to a variety of different substrates





CLADDING REMEDIATION

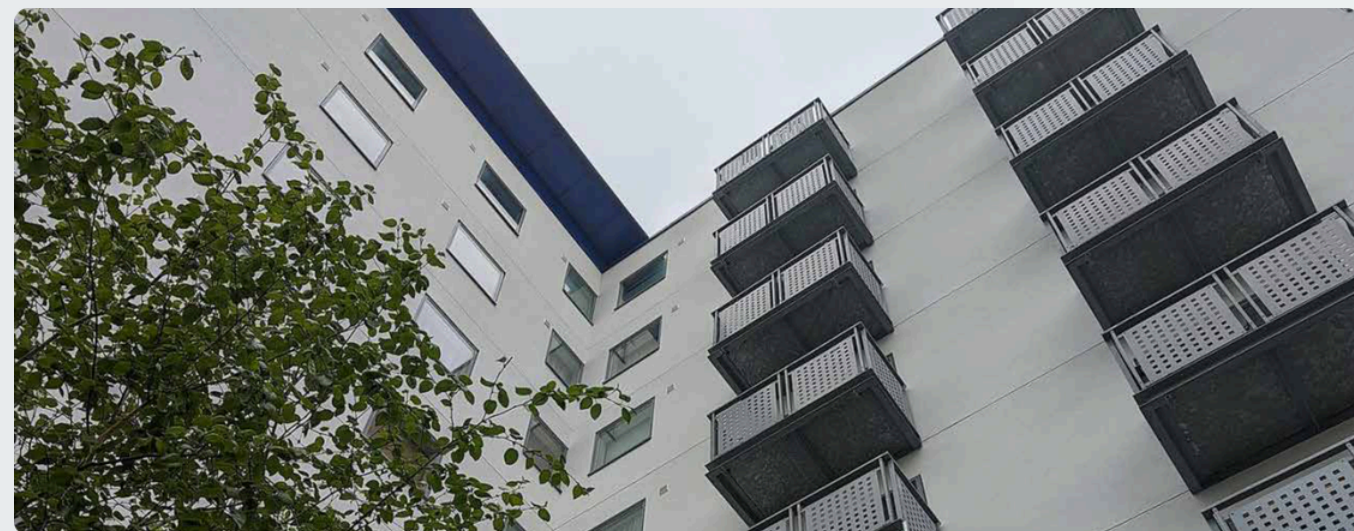
The programme launched by the Government to identify and prioritise the removal or remediation of cladding similar to that found on Grenfell Tower has made good progress, with housing associations and building owners taking action to review fire risk across all buildings, to keep buildings and their inhabitants safe. We are specialists in this area, working with a growing number of clients on cladding remediation and strip and reclad projects.

- ✔ Safety: older rainscreen cladding may no longer meet new legislation and standards
- ✔ Compliance: ACM cladding must be removed in buildings of 18m or over
- ✔ Environmental: replacing existing cladding can significantly extend the lifespan of a building



[Due to the sensitivity and the nature of the cladding work being carried]
The Health and Safety Executive came to the site, looked at what we were doing, what Eden were doing, and went away happy that everything was being done correctly. It's a good endorsement and we wouldn't hesitate to work with Eden Facades again on future projects.

Gavin Leeks, Building Solutions Manager, RG Carter

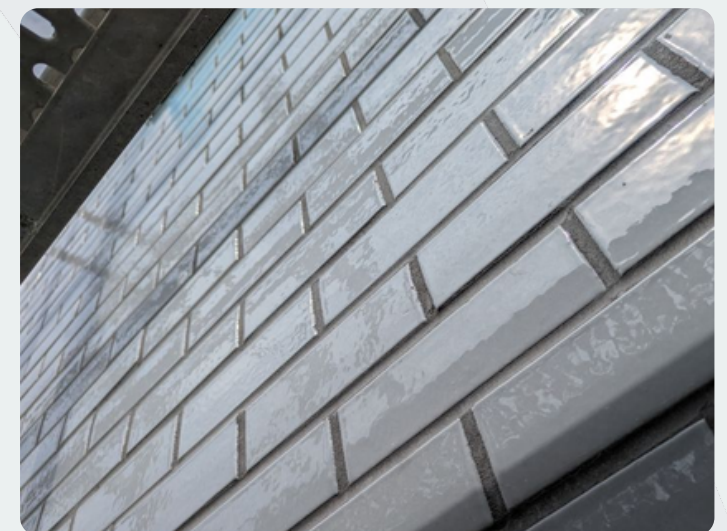
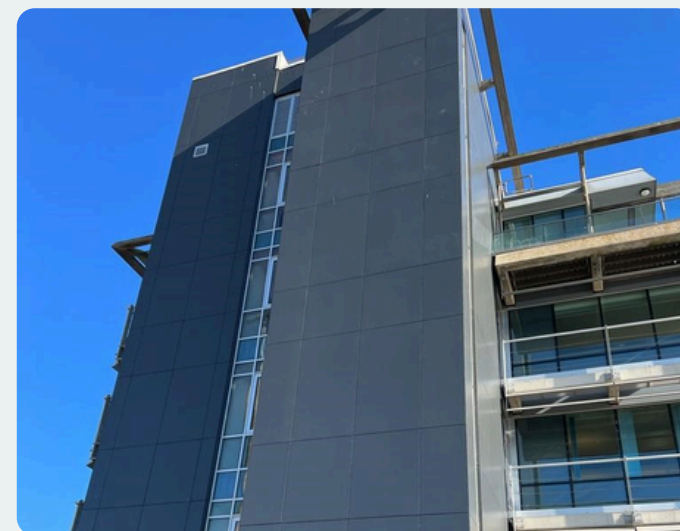


INTRUSIVE SURVEYS

Intrusive façade surveys provide clients with a clear understanding of the existing façade and wall system, including the build-up, materials used, and potential areas of concern. Surveys are carried out with precision and care, ensuring minimal disruption while delivering accurate and reliable information for cladding remediation and new works.

- ✔ Accurate information – Provides clear insight into the existing façade construction and materials used.
- ✔ Informed decision-making – Supports remedial planning, compliance checks, and future works with reliable data.
- ✔ Minimal disruption – Surveys are carried out carefully to reduce impact on the building and its users.
- ✔ Professional reinstatement – All openings are closed using A-rated or client-approved materials.
- ✔ Clear reporting – Findings are fully documented with photos, measurements, and uploaded to Fieldview for easy client access.

Once complete, the openings are reinstated using only A-rated or client-approved materials. All findings are compiled into a clear, detailed report, with supporting photos and measurements and uploaded to Fieldview for easy client review.





WINDOWS & CURTAIN WALLING

We offer a full window and curtain walling service for both new build and redevelopment projects. Minimise costs and streamline the construction process by engaging a single contractor. Our team oversees the entire project, enabling us to anticipate and resolve potential problems before they become issues, resulting in fewer delays and less duplication of work. This level of flexibility means we can revise plans according to the project's needs.

- Streamlined project management
- Consistency across the project
- Flexibility across the moving parts of the project
- Fewer delays
- Proactive problem solving
- A more cost-effective service



The communication we received from Eden Facades was consistently good, and they kept us abreast of developments on the project. We would have no hesitation in working with them again on future projects. Ed Dwight, Project Manager, Kier Construction



It was vital that we worked with a team we could trust to deliver an outstanding quality of finish. We're looking forward to working with Eden Facades and know the work they deliver will be first-class. John McGrath, Senior Site Manager, Berkeley Homes Central London



“Throughout the project, Eden Facades demonstrated a high level of professionalism and commitment to quality. Their team worked collaboratively with our site management and design team to deliver a high-quality façade that exceeded expectations.” Matthew Melvin, Project Manager at Boom Construction



Of course, as with any project, there have been challenges, but Eden have been able to help us work through them, and as the project has progressed, we've found them to be a very reliable partner. They've really helped to keep things running smoothly. I would have absolutely no hesitation in working with them again. Liam Fennessy, Project Manager Weston Homes



WEST END GATE, LONDON

Products

Hook-on cassette rainscreen cladding; PPC metal railings & balustrades; Kingfisher louvres

Designed by award-winning architects Scott Brownrigg, West End Gate is a collection of homes set close to the upmarket neighbourhood of Marylebone in central London.

With the whole development taking place over several years, we were brought in by main contractor Berkeley Homes Central London, to work on Blocks C, D and B of the project. Our scope of works for these chic homes included installing rainscreen cladding in both patterned and plain panels, metal railings and balustrades to balconies and a rooftop plant screen louvre.



Contractor
Berkeley Homes
Central London

RIVERSIDE LEISURE CENTRE, ESSEX

Products

Ash & Lacy lightweight steel framing system; Ash & Lacy Lingrid aluminium cassette rainscreen cladding; Wetherby insulated render system

Riverside Leisure centre in Chelmsford benefited from a multi-million-pound redevelopment, achieving a BREEAM 'very good' rating. With new and improved facilities for the visitors inside the centre, it was our responsibility to ensure that the outside of the building fulfilled the architects' vision and blended in with the surroundings. Working in partnership with Kier Construction Eastern, we were brought on board to install lightweight steel framing, rainscreen cladding, render and insulated render.

We used Ash and Lacy site fixed lightweight steel framing, a system that is flexible and light and works with the majority of external finishes, and Ash and Lacy's Lingrid system to achieve the stunning 'bubble' look of the architect's design.



Contractor
Kier Construction

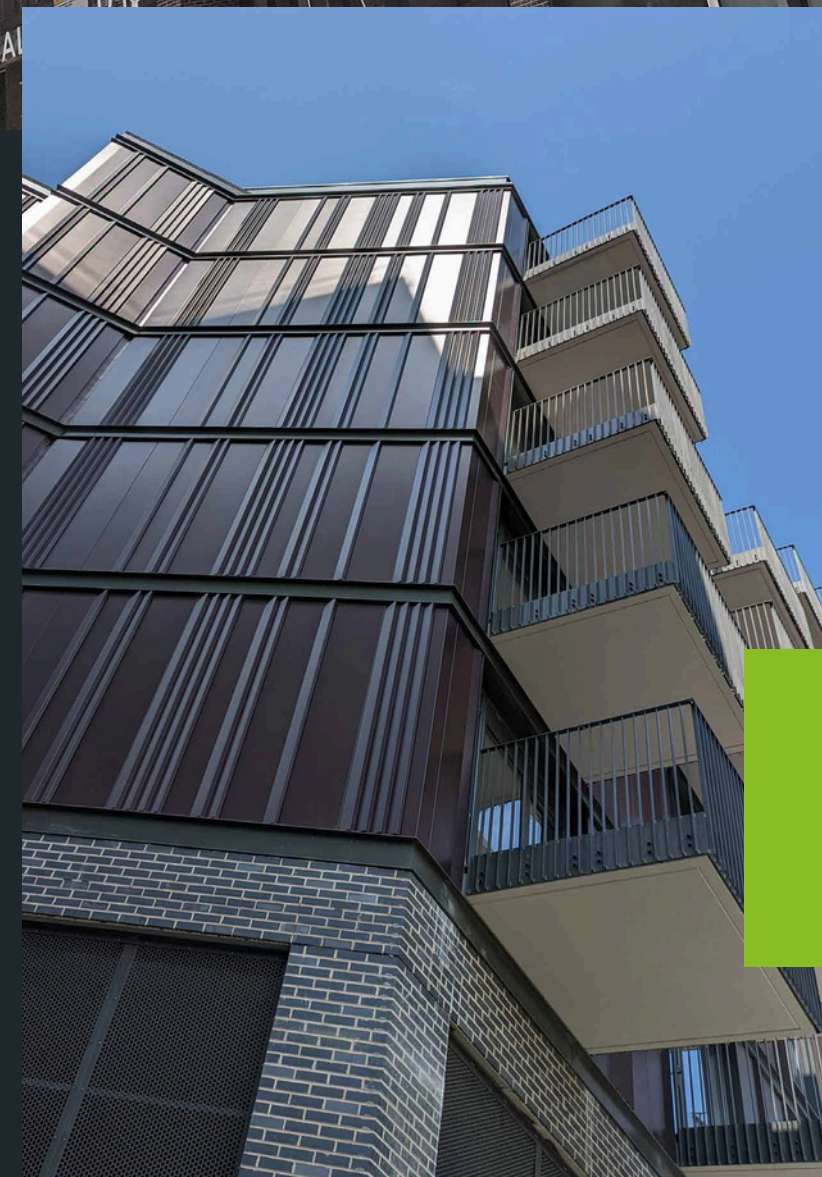
ASSEMBLY BUILDINGS, LONDON

Products Bespoke profiled aluminium rainscreen cladding; perforated steel profiles.

The Assembly Buildings in Hayes, West London, is a development of contemporary apartments that forms part of the regeneration of the Old Vinyl Factory, home of EMI and where records for artists such as The Beatles and The Rolling Stones were pressed.

The redevelopment of the iconic site also includes office buildings, restaurants, shops and a cinema. In our first project for main contractor Weston Homes, our scope was to install bespoke folded aluminium rainscreen cladding to the three concrete-framed blocks, and perforated steel profiles to the ground floors.

With many of the apartments now occupied, we are proud to have delivered a first-class project.



Contractor
Weston Homes

DAME CLARE MARX BUILDING, COLCHESTER

Products A1-rated Y-Wall, Metsec SFS, Wetherby insulated brick slip system, Insulated render system

The £64 million Essex & Suffolk Elective Orthopaedic Centre, a significant addition to Colchester Hospital, is a state-of-the-art, four-storey modular block designed to cater to over 10,000 patients annually.

The build is a hybrid design combining Modern Methods of Construction (MMC) and traditional building techniques. MTX appointed Eden Facades to supply and install the façade of this new build.

Our scope for this project included installing a brick-slip system on the lower levels, rainscreen cladding on the upper elevations, louvre screens, insulation and fire barriers.



Contractor
MTX



BROOMFIELD CARE HOME, CHELMSFORD

Products A1-rated Y-Wall, Metsec SFS, Wetherby insulated brick slip system, Insulated render system

We delivered the complete external façade package for the redevelopment of Broomfield Care Home in Chelmsford – transforming a former hospital building into a high-spec, modern care facility.

The works involved removing the existing sheathing board and installing the A1-rated Y-Wall board, installing a Wetherby insulated brick slip system to the upper floors, and an insulated render system with a stone-effect finish was applied at ground floor level, creating visual contrast.

In addition to the rear of the building, we constructed a new three-storey extension using Metsec SFS on a steel frame, which was then finished to match the rest of the façade.



Contractor
R G Carter





Addington Valley, Croydon

Contractor

Kier Construction

Products

SFS supplied by Metsec; Y-wall sheathing board supplied by RCM; Vitrafix system and Ceramapanel cladding supplied by Valcan.

Designed by Noviun Architects, the project at Addington Valley Academy involved the demolition of the old community centre that had previously stood on the site, re-landscaping the area, and the construction of a new, steel-framed school building.

Having worked with Kier Construction on many projects previously, we pre-qualified for the project at Addington Valley through the Kier supply chain process and were awarded the contract based on our technical review and previous experience.



Renaissance & Baroque, London

Contractor

United Living

Products

Wetherby insulated render system.

Our scope was to remove the existing EPS insulated render system and sheathing boards from the residential blocks and replace with an A-rated sheathing board and mineral fibre insulated render system from Wetherby.

As a large strip off and reclad project, the QA process for the project was rigorous, ensuring all fire breaks and windows were in line with the most recent fire regulations. The client was delighted with the finished result for this high profile project.



9 Millbank, London

Contractor

Berkeley Homes Central London

Products

Hadley Steel Framing SFS off-site steel bolted frame system.

Occupying a statement address in the heart of Westminster, this residential development at Millbank in central London offers a collection of prestigious Grade II listed homes.

Having worked with main contractor Berkeley Homes Central London on previous projects, we were appointed by them again to work on this impressive development.

Our initial scope of works was to install 100mm SFS as roof trusses, fixed to the existing concrete primary structure.



Seacon Building, Ebbfleet

Contractor

Ash Contracting

Products

Metsec SFS, Equitone rainscreen cladding, Rockwool insulation, Rockwool fire barriers.

Marjoram Architects and the main contractor, Ash Contracting, were instructed to work on the project, and having worked with Ash Contracting on previous projects; the Eden Facades team was approached to carry out the works for the new build overlooking the Thames.

Our scope for this project involved installing SFS infill walling, insulation, and rainscreen cladding.

“Following a recent site visit, I want to say how good the cladding and capping looks – it’s brilliant!” Kristian Marjoram, Director at Marjoram Architects



OrbisEnergy, Suffolk

Contractor

R G Carter

Products

Swisspearl cladding, Rockwool insulation

Based on the Suffolk coast, OrbisEnergy in Lowestoft is a cutting-edge, environmentally friendly building providing office space for businesses that are driving innovation and investment in offshore renewables.

OrbisEnergy’s proximity to the coastline had resulted in some weather damage to the existing building’s cladding, which was in need of refurbishment.

We were brought in to remove the existing cladding, rails, and insulation from the building, and replace with new breather membrane, fire breaks, bracket and rails and insulation.



Little Readings School, Hertfordshire

Contractor

Morgan Sindall

Products

EWI Pro insulated render system; Mineral Wool Insulation Slabs; soffits, fascias, copings and flashings by Trueline

Our successful collaboration with Morgan Sindall on the construction of a new school in Bushey, Hertfordshire, is a testament to our ability to work with industry leaders and deliver high-quality projects. This project was part of the DfE School Rebuilding programme, a major rebuilding and refurbishment government initiative for school and sixth-form college buildings across England.

Morgan Sindall approached us to install the EWI system, a task we were more than prepared for, with over 25 years of experience in installing EWI systems. We have demonstrated our expertise in recent projects, such as the Meadows Estate in Hounslow and the Fairview Pru School in Basildon, and have a proven track record in delivering high-quality results.



Meadows Estate, Hounslow

Contractor

United Living Infrastructure

Products

PermaRock Mineral Fibre External Wall Insulation (EWI)

Facade upgrade for 100 homes at Meadows Estate, a social housing community in Hounslow.

Properties in the Meadows Estate social housing community in London were in need of an upgrade to improve insulation, aesthetics, carbon performance, and living conditions.

Focusing on improvements in insulation, waterproofing, and aesthetics, we employed a high-performance thermal insulation system, specifically the PermaRock Mineral Fibre External Wall Insulation (EWI), with a thickness of 230 millimetres.



Orwell Quay, Ipswich

Contractor

R G Carter

Products

Wetherby A2-rated insulated render system; Cedral Click cladding as a rainscreen system; Proteus A2-rated spandrel panels; Alideck A1-rated aluminium decking system; James & Taylor terracotta tile system

Orwell Quay is a complex of modern high-rise residential buildings in Ipswich. Cladding remediation was identified as a requirement in all buildings in the complex, with the work divided into two phases. Phase one started in the summer of 2022 and wrapped up in December 2023. Following its successful completion, phase two was then completed in 2024.

For all buildings involved, the requirement was to install replacement cladding and complete new rendering. Timber decking was also replaced, with new fire-rated systems.

CONTACT US

01268 744 199

office@edenfacades.co.uk

Alexander House,
Christy Close,
Basildon,
Essex,
SS15 6TL

 [@edenfacades](https://twitter.com/edenfacades)  [eden-facades-ltd](https://www.linkedin.com/company/eden-facades-ltd)